



BLUE STAR

# REFRIGERATION SOLUTIONS TO HELP YOUR BUSINESS DO BETTER.





DEEP  
FREEZER

DEEP FREEZER

BLUE STAR HARD TOP DEEP FREEZER.

STAY FRESH. STAY COMPACT.

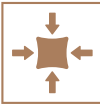
Blue Star offers a compact hard top deep freezer that is ideal for domestic or commercial use. It comes with a star rating that ensures its energy saving capabilities. Manufactured in our world-class state of the art factory, this product is made in India in every sense of the word.



Features



**Wide Range – Elegant Control Panel**  
Smart eye and Square design with LED light.



**Compact machine**  
Ideal for small storage.



**Super Tropicalised**  
Designed to work even in 47°C ambient summer conditions.



**Plastic Baskets**  
Long-lasting, corrosion-free, food-grade.



**Quadracool Technology**  
Ensures even and optimum cooling from four sides.



**Robust Construction**  
For long life.

Technical Specification

Model		CF2-90NEYW	CF3-130NEYW	CF4-180NEYW	CF4-230NEYW
Star Rating		2	3	4	4
Gross Capacity	L	71	108	161	215
Temperature Range		8°C to -26°C	8°C to -26°C	8°C to -26°C	8°C to -26°C
Refrigerant		R600a	R600a	R600a	R600a
No. of Lids		1	1	1	1
Inner Cabinet		Embossed	Embossed	Embossed	Embossed
PUF Thickness	mm	60	60	60	60
Overall Dimensions (WDXH)	mm	505 X 570 X 829	575 X 570 X 829	765 X 570 X 842	955 X 571 X 842
Overall Dimensions (WDXH)	Inch	20 X 22 X 33	23 X 22 X 33	30 X 22 X 33	38 X 22 X 33
Net Weight	Kg	25	28	31	35
Baskets- Plastic	Ea	1	1	1	1



BLUE STAR HARD TOP DEEP FREEZER.

LONG-LASTING FRESHNESS  
WITH ENERGY SAVINGS.

Our range of hardtop deep freezers are built using cutting-edge technology and come with the most innovative features. They not only provide long-lasting freshness but also deliver consistent performance in the high sub-continental temperatures. They also lower your power bills and make for the most effective and economical solutions for food storage.



Features



**Wide Range –  
Elegant Control Panel**  
Smart Eye and Burj design, can work as Freezer or Cooler as per need.



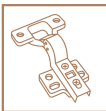
**Curvaceous Door Design With  
Built-In Crescent Handle**  
Ensures zero cooling loss while providing ease of opening from any angle.



**High Density PUF Insulation**  
For better holding time.



**Frosted Inner Lid**  
Avoid condensed water flow into the machine.



**Multi-Angle Hinge Design**  
Door lid can be opened from 45° to 75° and has a soft closing mechanism.



**Antibacterial Gasket**  
Removable gasket with silver ions offers greater food-safety assurance.

Technical Specification

Model		CF5-330NEYW/NPYW	CF5-396NEYW/NPYW	CF5-460NEYW/NPYW	CF5-575NEYW/NPYW
Star Rating		5	5	5	5
Gross Capacity	L	310	360	410	515
Temperature Range		8°C to -26°C	8°C to -26°C	8°C to -26°C	8°C to -26°C
Refrigerant		R290	R290	R290	R290
No. of Lids		2	2	2	2
Inner Cabinet		Embossed	Embossed	Embossed	Embossed
PUF Thickness	mm	65	65	65	65
Overall Dimensions (WDXH)	mm	1122 X 708 X 883	1262 X 708 X 883	1407 X 708 X 883	1697 X 708 X 883
Overall Dimensions (WDXH)	Inch	44 X 28 X 35	50 X 28 X 35	55 X 28 X 35	67 X 28 X 35
Net Weight	Kg	49/50	54/55	57/58	63/64
Basket – Metal	Ea	1	1	1	1

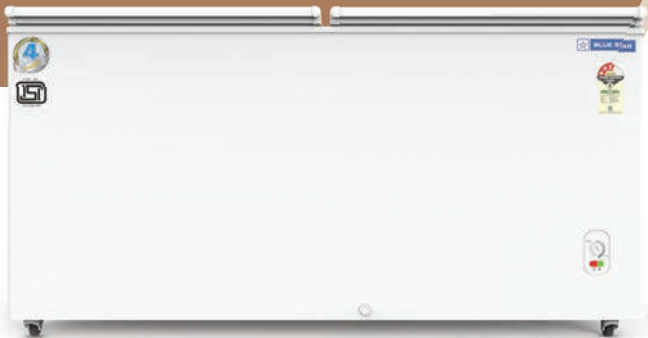


BLUE STAR HARD TOP DEEP FREEZER.

UNMATCHED COOLING PERFORMANCE.



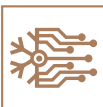
Blue Star's Deep Freezers are the most effective and economical for safe storage of perishable foods. The range of Hard-top Deep Freezers from Blue Star incorporate cutting-edge technology and innovative features, guaranteeing long-lasting freshness. Built to last and to meet the demands of the high sub-continental temperatures, these machines cut power bills through energy-saving innovations thus, helping your business grow.



Features



**Antibacterial Gasket**  
Removable gasket with silver ions offers greater food-safety assurance.



**Convertible Cooling Technology**  
Can work as Freezer or Cooler as per need.



**Corrosion Resistant Body**  
Anti-corrosive body, embossed metal surface finish and long product life.



**Robust Construction**  
For long life.



**Highly Energy-Efficient Compressor**

Technical Specification

Model		CF3-300MEW-SD/MPW-SD	CF3-300MEW/MPW	CF3-400MEW/MPW	CF3-500MEW/MPW
Star Rating		3	3	3	3
Gross Capacity	L	301	301	401	484
Temperature Range		8°C to -26°C	8°C to -26°C	8°C to -26°C	8°C to -26°C
Refrigerant		R290	R290	R290	R290
No. of Lids		1	2	2	2
Inner Cabinet		Embossed/ Plain Sheet	Embossed/ Plain Sheet	Embossed/ Plain Sheet	Embossed/ Plain Sheet
PUF Thickness	mm	60	60	60	60
Overall Dimensions (WxDXH)	mm	1147 x 678 x 857	1147 x 678 x 857	1447 x 678 x 857	1647 x 678 x 857
Overall Dimensions (WxDXH)	Inch	45 X 27 X 34	45 X 27 X 34	57 X 27 X 34	65 X 27 X 34
Net Weight	Kg	46 / 47	47 / 49	56 / 58	61 / 63
Basket - Metal	Ea	1	1	1	1

BLUE STAR GLASS TOP DEEP FREEZER.

SUPER-FREEZING MARVEL.

Blue Star's Compact Glass Top Deep Freezer is the perfect choice in a domestic or commerical setting. It provides optimal storage space and Low E-Toughened glass that seamlessly displays products. It is available in multiple colours and also comes with a star rating that ensures its energy saving capabilities. Manufactured in our world-class state of the art factory, this product is truly Indian at heart.



Features



**Optimised Storage Space**  
Industry-leading cooling, maximises display. Scooping depth for candy cones, boosting profits with increased storage capacity.



**Super Tropicalised**  
Designed to work even in 47°C ambient summer conditions.



**Low E-Toughened Glass**  
Reflective glass for high performance and better visibility.



**Maximum Frontal Branding Area**  
Temperature controller on side grill ensures 100% space for branding on the front.



**Multi-Colour Frame Options**  
Allows for customisation to enhance brand display and awareness.



**Plastic Baskets**  
Long-lasting, corrosion-free, food-grade.

Technical Specification

Model		GT5-130NP	GT5-180NP	GT5-230NP
Star Rating		5	5	5
Gross Capacity	L	108	161	215
Temperature Range		-13°C to -26°C	-13°C to -26°C	-13°C to -26°C
Refrigerant		R600a	R600a	R600a
No. of Lids		2	2	2
Inner Cabinet		Embossed	Embossed	Embossed
PUF Thickness	mm	60	60	60
Overall Dimensions (WDXH)	mm	577 X 527 X 810	767 X 527 X 810	957 X 527 X 810
Overall Dimensions (WDXH)	Inch	23 X 21 X 32	30 X 21 X 32	38 X 21 X 32
Net Weight	Kg	29	32	37
Baskets- Plastic	Ea	1	1	2



BLUE STAR GLASS TOP DEEP FREEZER.

BETTER MERCHENDISING.

ENHANCES IMPULSE.



Our Glass Top Deep Freezers let you display frozen foods in an attractive manner, leading impulse purchases and greatly improving sales. Also available with glasstop sliding doors, these freezers are energy-efficient and economical. Selected models comes with LED and offer a range of colors to cater to diverse customer preferences.



Features



**Optimised Storage Space**  
Industry-leading cooling, maximises display. Scooping depth for candy cones, boosting profits with increased storage capacity.



**High Density PUF Insulation**  
For better holding time.



**Maximum Frontal Branding Area**  
Temperature controller on side grill ensures 100% space for branding on the front.



**Crown Design**  
Looks premium and has a robust frame design.



**Plastic Basket**  
Long-lasting, corrosion-free, food-grade.



**Multi-Colour Frame Options**  
Allows for customisation to enhance brand display and awareness.

Technical Specification

Model		GT5-350N/NP	GT5-410N/NP	GT5-475N/NP	GT5-590N/NP
Star Rating		5	5	5	5
Gross Capacity	L	315	365	421	530
Temperature Range		-13°C to -26°C	-13°C to -26°C	-13°C to -26°C	-13°C to -26°C
Refrigerant		R290	R290	R290	R290
No. of Lids		2	2	2	2
Inner Cabinet		Embossed	Embossed	Embossed	Embossed
PUF Thickness	mm	65	65	65	65
Overall Dimensions (WXDXH)	mm	1125 X 670 X 859	1265 X 670 X 859	1410 X 670 X 859	1700 X 670 X 859
Overall Dimensions (WXDXH)	Inch	44 X 26 X 34	50 X 26 X 34	56 X 26 X 34	67 X 26 X 34
Net Weight	Kg	52/55	56/58	60/64	68/72
Baskets- Metal/Plastic	Ea	4/4	4/5	6/6	6/6

\*\*LED light option available only in NL/ NPL Versions



BLUE STAR CHEST COOLER.

QUICK COOLING  
FOR QUICK PROFITS.

Blue Star Chest Coolers are meant for super-fast temperature pull-down of soft drinks, milk and beverages in harsh summer conditions. This makes them perfect for commercial businesses like restaurants, hotels, dairy and fast food outlets. They are equipped with efficient compressor and new gen technology to ensure energy savings and are exactly what you need to keep the cool in your business.



Features



Faster Temperature  
Pull-Down



Energy-Efficient Compressor  
For Savings In Electricity Bills



High Density Puf Insulation  
For Longer Cooling Retention



Tropicalised For Harsh  
Indian Summers



Multi-Angle Hinge Design For  
Effortless Operation



Safe Closure With Lock  
And Key

Technical Specification

Description		CHBK300MP	CHBK400MP	CHBK500MP
Gross Capacity	Ltr	301	401	484
Temperature Range		2°C to 8°C	2°C to 8°C	2°C to 8°C
Refrigerant		R134a	R134a	R134a
No of Lids		1	2	2
Inner Cabinet		Embossed	Embossed	Embossed
PUF Thickness	mm	60	60	60
Overall Dimensions (WxDxH)	mm	1147 x 678 x 857	1447 x 678 x 857	1647 x 678 x 857
Overall Dimensions (WxDxH)	Inch	45 X 27 X34	57 X 27 X34	65 X 27 X34
Net Weight	kg	55	65	73





BLUE STAR COOLER CUM FREEZER.

MULTIPLE NEEDS. SINGLE SOLUTION.

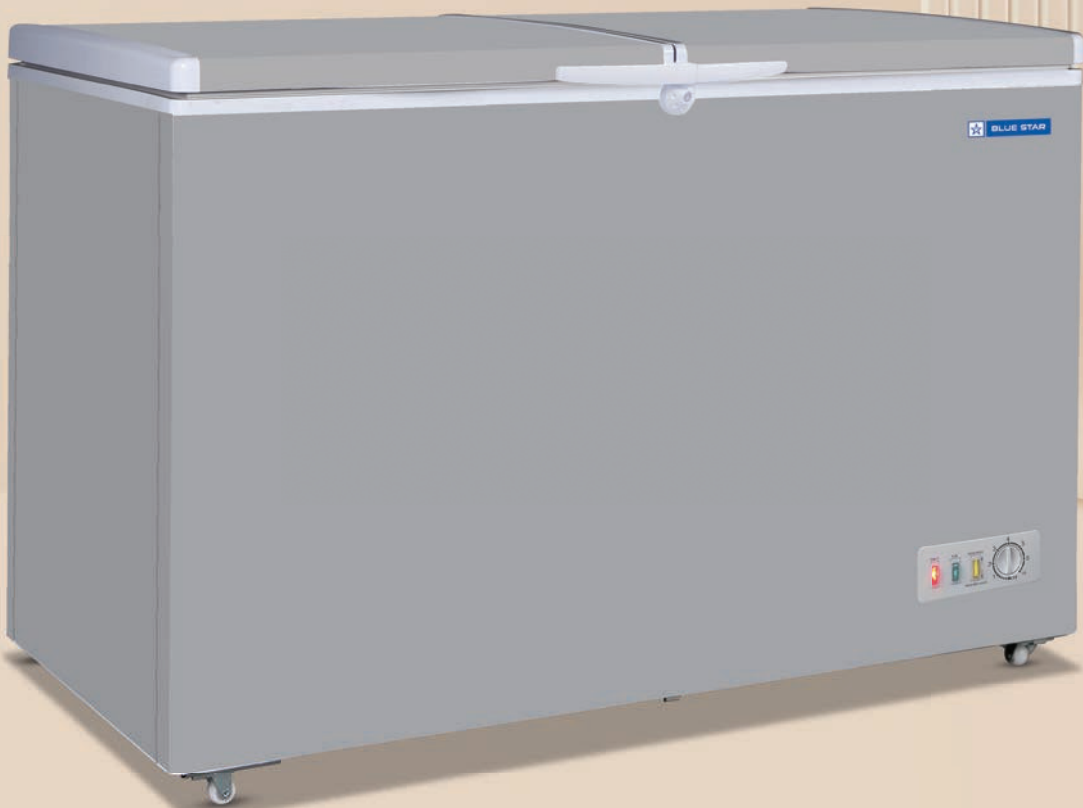
The Blue Star Cooler-cum-Freezer is just what you need when you have to store a variety of frozen food and chilled drinks in one single unit. By combining two machines in one, it saves space and lowers capital investment as well as operating costs. In other words, the Blue Star Cooler-cum-Freezer is a great example of how two halves can add up to a lot more.



Features

- 2

Dual compartment machine configured as freezer in one and cooler in the other
- Two separate lids ensure independent access to freezer and cooler chambers
- Easy to clean and maintain hygiene
- Excellent Drain Design
- Versatile wheels for easy movement and placement of unit
- Fast Freeze Mode



Technical Specification

Model Name		CHFK275DGS/-B/-G	CHFK350DGS	CHFK400DGS	CHFK500DGS
Cooler Capacity	Ltr	105	150	148	162
Freezer Capacity	Ltr	139	185	217	319
Total Capacity	Ltr	244	335	365	481
Temperature Range – Cooler	°C	2°C to 8°C	2°C to 8°C	2°C to 8°C	2°C to 8°C
Temperature Range – Freezer	°C	-18°C to -22°C	-18°C to -22°C	-18°C to -22°C	-18°C to -22°C
Refrigerant		R600a	R290	R290	R290
Overall Dimensions (WxDxH)	mm	1069 X 599 X 860	1336 X 665 X 865	1355 X 770 X 880	1535 X 845 X 915
Overall Dimensions (WxDxH)	Inch	42 X 24 X 34	53 X 26 X 34	53 X 30 X 35	60 X 33 X 36
Net Weight	kg	44	52	61	70